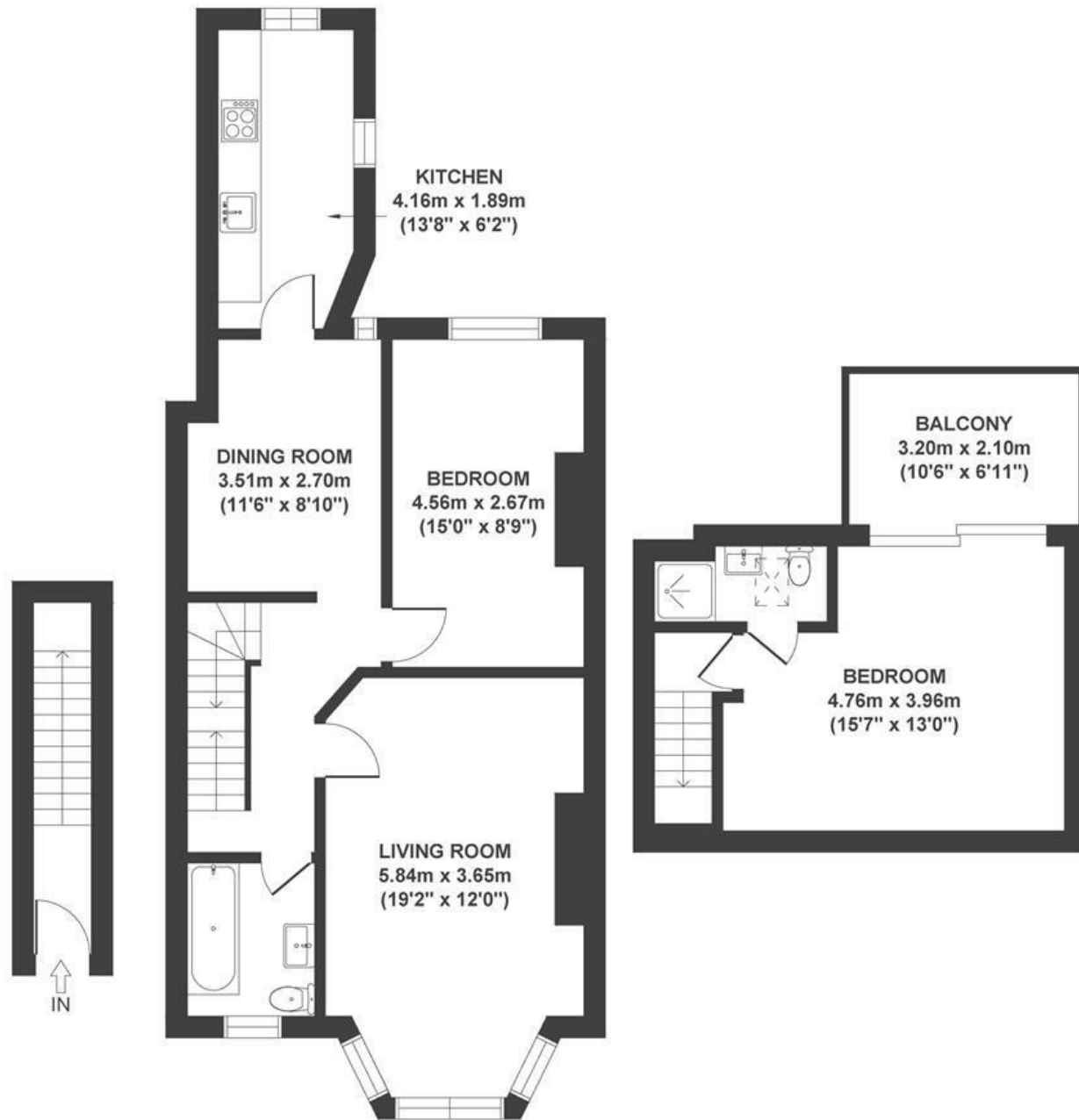


Cleeve Road

KNOWLE

APPROXIMATE FLOOR AREA
100 SQM / 1076 SQFT



GROUND FLOOR

FIRST FLOOR

SECOND FLOOR

Boardwalk

Cleeve Road

KNOWLE, BRISTOL



£325,000



2 Bedrooms



BS4 2JP



2 Bathrooms

"I've loved my time on Cleeve Road, the neighbours are all fantastic and were very welcoming. It's a super quiet residential street and the maisonette has been an ideal home over the last 5 years. The absolute highlight for me has been the balcony, waking up to morning sunrises in the winter and enjoying bbq's in the summer with a few friends. I hope the next owners enjoy the views as much as I have!"

